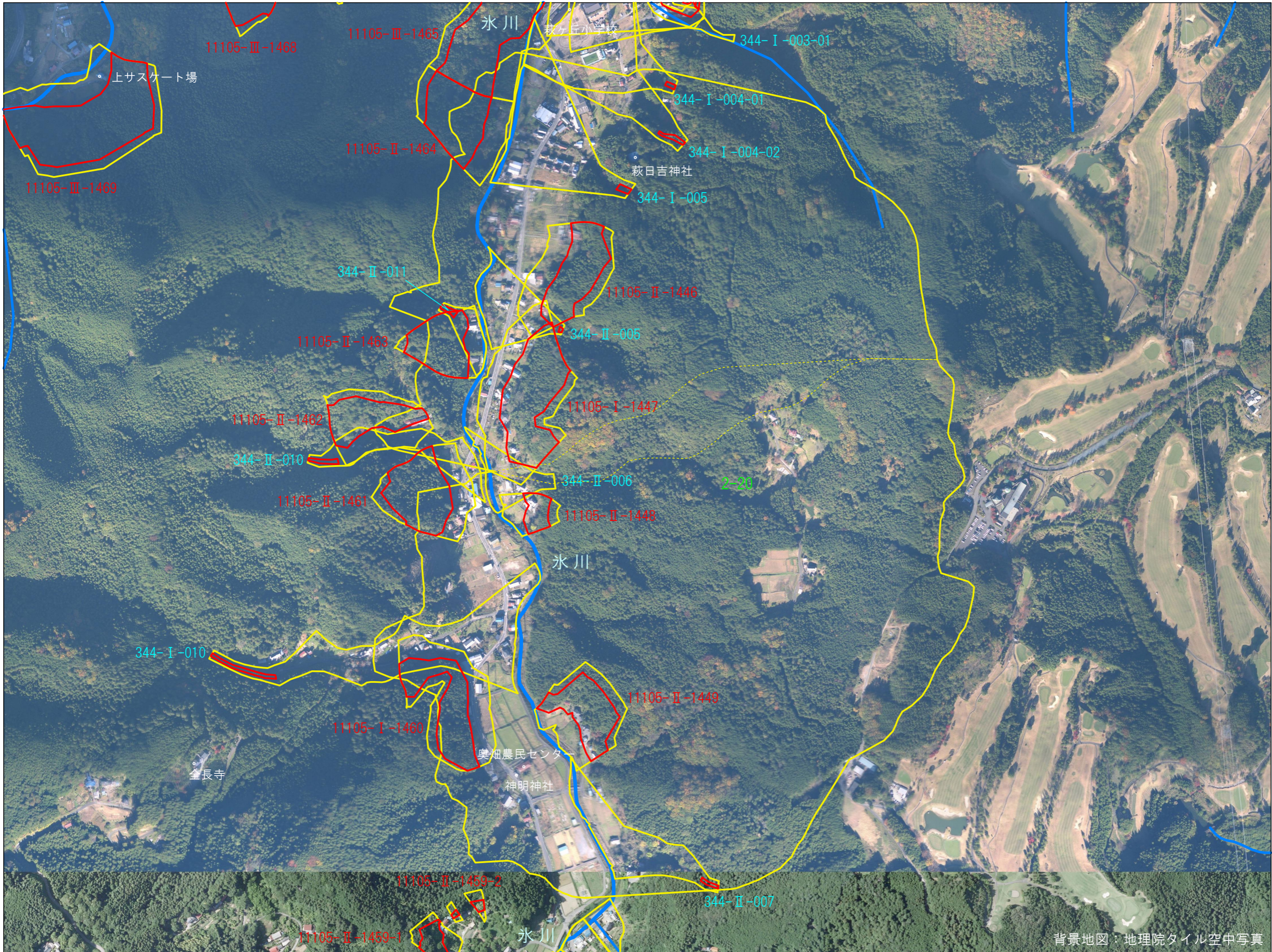






土砂災害警戒区域等




〔比企郡ときがわ町⑪〕

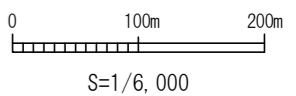


〔凡例〕

-  土砂災害警戒区域
-  土砂災害特別警戒区域
-  河川
-  行政界

〔土砂災害警戒区域表示〕

-  300-I-000 土石流
-  11105-I-0000 急傾斜地の崩壊
-  2-20 地すべり



背景地図：地理院タイル空中写真

令和5年3月調製