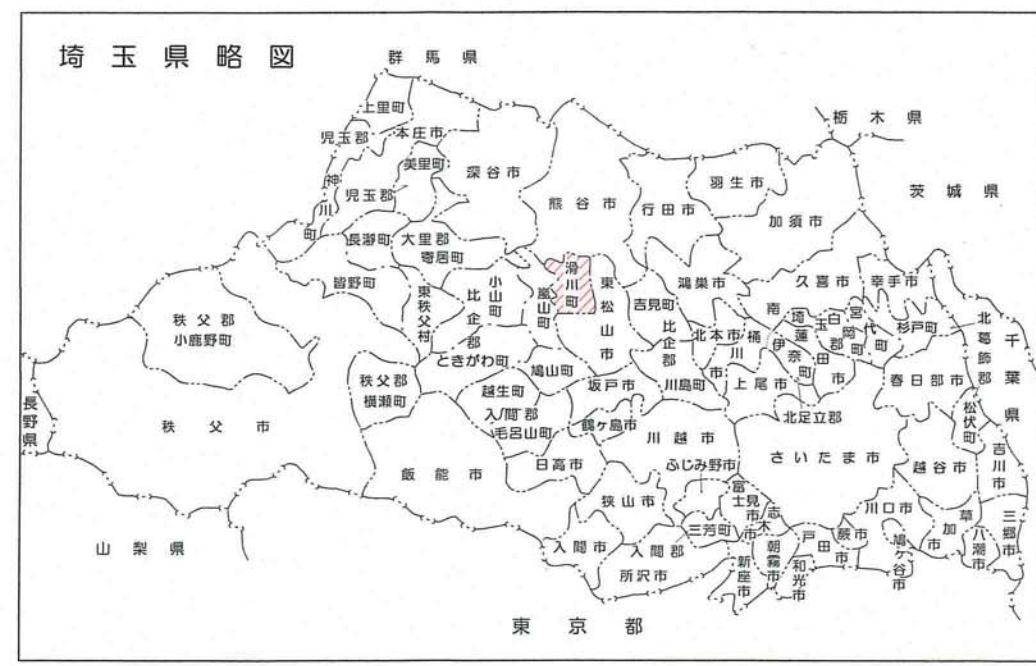


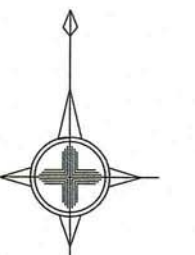
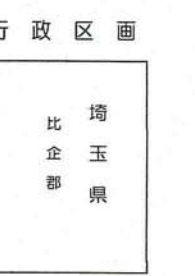
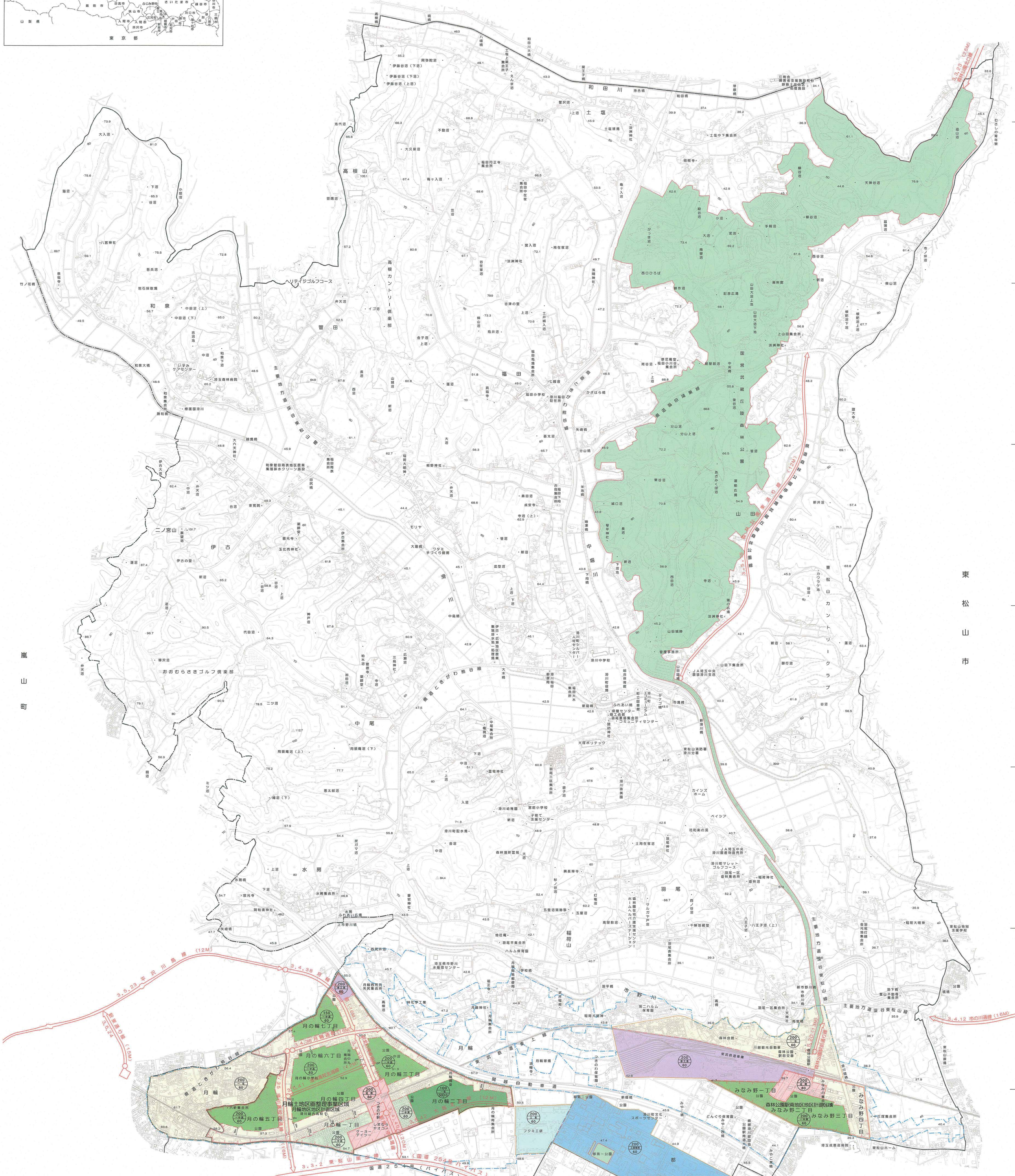
滑川町都市計画図



熊谷市

東松山市

嵐山町



記号

- Legend for various symbols used on the map, including symbols for roads, rivers, and public facilities. The list includes symbols for main roads, secondary roads, rivers, and various types of public buildings and parks.



Table listing urban planning decisions and their effective dates. Columns include '都市計画' (Urban Planning), '計画決定及び変更年月日' (Date of Decision and Change), and '告示番号' (Notice Number). It lists various decisions regarding land use zones, public facilities, and administrative boundaries.

Table listing urban planning decisions and their effective dates for neighboring municipalities. Columns include '都市計画' (Urban Planning), '計画決定及び変更年月日' (Date of Decision and Change), and '告示番号' (Notice Number). It lists decisions from neighboring municipalities like Maebashi and Maebashi City.

1:10,000

Table titled '凡例' (Legend) showing land use zones, their building rates (建ぺい率), and coverage rates (容積率). It lists zones like '第1種低層住居専用地域' (Type 1 Low-rise Residential Special Use Zone) and '工業専用地域' (Industrial Special Use Zone).

※東松山工業団地の下水道(汚水・雨水)については東松山公共下水道で認可

滑川町

本図は、平成24年3月現在 1:2500 滑川町都市計画図を縮小編纂したものである。

座標系 測区系 等高線間隔 10 m